

Etowah Institute

ETOWAH, N. C.



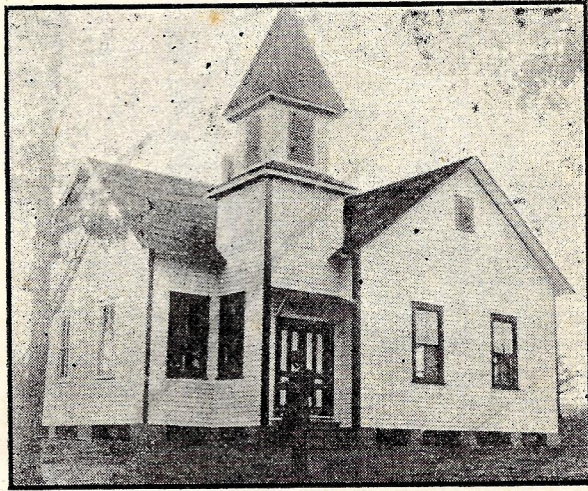
Rev. M. A. MATHESON
Principal



1 9 1 1

Etowah Institute

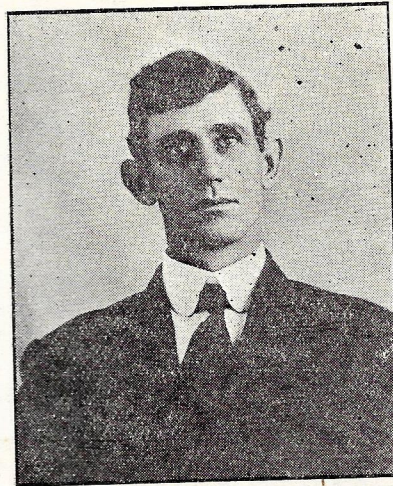
ETOWAH, N. C.



Rev. M. A. MATHESON
Principal

1 9 1 1

ETOWAH INSTITUTE



REV. M. A. MATHESON.

TRUSTEES.

S. N. Merrill, S. B. Lance, J. W. Orr, J. T. Woodfin and C. O. English. Associate Trustees: Rev. W. C. Matney, Rev. A. Graybeal, Rev. D. L. Earheardt, Rev. W. A. Patton, and Rev. M. A. Matheson.

TUITION

All pupils in the Etowah public school district will be admitted to free tuition up to the Eighth grade for the first four months and then they will be subject to the plans of tuition according to grade. The first three, 1st, 2nd and third grades, will be 75 cents per month. 4th, 5th and 6th \$1.00; 7th and 8th grades \$1.25; 9th and 10th \$1.50. The term will be eight months.



ETOWAH INSTITUTE

LOCATION.

The school is located in the beautiful valley of the French Broad river near the Lake Toxaway Railroad, ten miles west of Hendersonville with an altitude of about 2,000 feet. A healthful climate, also surrounded by a fine farming section and beautiful mountain scenery. Value of school and church property \$2500.00

WHAT THE SCHOOL IS.

A high preparatory school of ten grades to fit our boys and girls for College and the business life and also to encourage neatness, morality and good citizenship.

OPPORTUNITIES.

Methodist and Presbyterian churches, preaching twice a month and Sunday school each Sabbath. Prayer meeting Wednesday night, Library Society Friday night.

BOARD.

Good board can be had in private homes for ten dollars per month, or rooms may be rented to those who want to board themselves.

BUILDING.

The building is situated on a campus of four and a half acres of land near the railroad station and postoffice with two nice recitation rooms well furnished with good desks and blackboards and otherwise arranged for the comfort of the pupils.

GOVERNMENT AND CONTROL.

The school is owned and controlled by the Methodist Episcopal Church, and the county board of education of Henderson county has the privilege of having the public school taught in the building.

The Principal has had twelve years experience in teaching and will have able assistance to aid in teaching all the branches named in the Catalogue.

SPECIAL.

A Special Normal Course will be given to those who want to teach the last six weeks of the spring term, for \$3.00 extra.

All the holidays will be observed with appropriate exercises.

School opens August 1st 1911 to March 24, 1912. For further information address the principal.

M. A. MATHESON,
Etawah, N. C.

COURSE OF STUDY.

First Grade.

Graded Classics I.
Practical Drawing I.
Number Work.
Supplementary Stories.

Second Grade.

Graded Classics II.
A Spelling Book.

Practical Drawing II.
Number Work.
Pencil and Tablet.
Supplementary Stories.

Third Grade.

Graded Classics III.
A Spelling Book.
Practical Drwing III.
Copy Book I.
Primary Arithmetic.
Supplementary Stories.
Tablets and Pencil.

Fourth Grade.

Graded Classics IV.
A Spelling Book.
Practical Drawing IV.
Copy Book II.
Primary Arithmetic.
Elementary Geography.
Language Lessons I.
Supplementary Stories.

Fifth Grade.

Graded Classics V.
A Spelling Book.
Practical Drawing V.
Copybook III.
International Arithmetic.
Elementary Geography.

Sixth Grade.

A Spelling Book.
Practical Drawing VI.
Copybook IV.
Language Book II.
New Complete Geography.
Arithbetic.
Advanced U. S. History.

Culler's Physiology II.
Supplementary Reading.

Seventh Grade.

Practical Drawing VIII.
Copybook V.
English Grammar.
New Complete Geography.
Advanced Arithmetic.
Culler's Physiology III.
Elements of Agriculture.
Supplementary Reading.
North Carolina History.

Eighth Grade.

1

First Lear in Latin.
Rhetoric.
English History.
Physical Geography.
Beginners Algebra.
Civil Government.
Arithmetic.

Ninth Grade.

Algebra.
Second Year Latin.
Rhetoric and Composition.
History.
Supplementary Reading.

Tenth Grade.

Third Year Latin...
Plain Geometry.
English Literature.
General History.
Supplementary Reading|

MEN'S & BOYS CLOTHING

Ladies' Coats and Coat Suits, High Grade Shoes for Men and Women in sample lots at half price. We carry everything that is to be had in a first class clothing and dry goods store. Our chain of six stores gives us a buying power that will guarantee you the right price at our stores. 10 per cent discount to all teachers and students.

GLAZENER

Cuts the Price and Sells the Goods

HENDERSONVILLE & BREVARD

THE CLIMAX BARBER SHOP

MOST UP-TO-DATE CIGAR STORE IN THE CITY

Everything Sanitary

BATHS

SMOKING, CHEWING TOBACCO, PIPES

Look for the Big Electric Sign

B L. BROOKS, Prop.

Hendersonville, N. C.

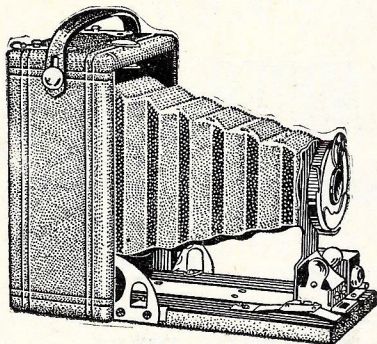
CLARKE HARDWARE CO.

Everything in Hardware

HENDERSONVILLE -- NORTH CAROLINA

STAR Brand Shoes are Better
Brand Shoes are Leather

ASK M. M. SHEPHERD



HIGH-CLASS
PHOTOGRAPHY
OF ALL KINDS

Artist Materials,
Kodaks and Kodak Supplies,
Developing and Finishing
Finest Collection of Post Cards in City.

BAKER'S ART GALLERY

Corner Main St., and 6th Avenue.
HENDERSONVILLE, N. C.

Brownie Cameras from \$1.00 up.

S. N. MERRILL

DEALER IN

GENERAL MERCHANDISE

Your patronage is solicited with every assurance of a Square Deal.

I sell what you want. I buy what you sell.

S. N. MERRILL

Etowah, N. C.

S a y !

When You Need

D R U G S

And Good

SODA WATER

Go to

Hunter's Pharmacy

Near the Postoffice

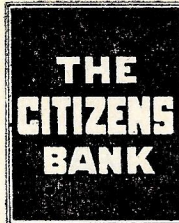
AGENT FOR JACOB & TAYLOR BROS, CANDIES

THE ROSE PHARMACY

EVERYTHING IN DRUGS

PRESCRIPTIONS A SPECIALTY

We are interested in your needs. Let us know
what they are and we will supply them
accurately and promptly



HENDERSONVILLE, N. C.

OUR MOTTO:
"Absolute Safety for Depositors"

We solicit the account of every
student and friend of Etowah
Institute and offer them every
accommodation consistent with
safe banking : : :

F. E. DURFEE, Pres't. E. W. EWBANK, Vice-Pres't.
C. E. BROOKS, Cashier

4 ⁰/₀ **PAID ON**
TIME DEPOSITS

